

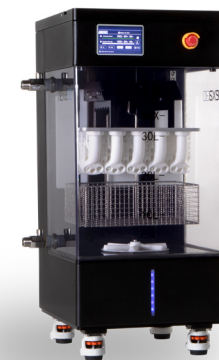
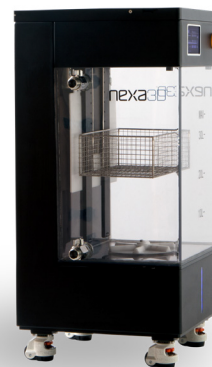
## xWASH

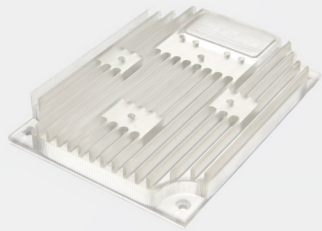
Nexa3D's xWASH matches the build volumes and process requirements of the ultrafast NXE400 3D printer, and is engineered for Nexa3D's photoplastic materials, giving manufacturers a **powerful, consistent, and sustainable washing solution**.

The xWASH is optimized for and validated with **Nexa xClean**, which offers 3X saturation limits, environmentally friendly recycling options, and enhanced chemical/flash-point safety characteristics.

The xWASH directly accommodates the full NXE400 build volume, accepts **up to two NXE400 build platforms simultaneously** for streamlined post-processing workflow, or the option of a loose parts basket for production flexibility; it can also accept the full NXE400 build volume. Bi-directional agitation with variable speeds ensures efficient cleaning regardless of part geometry, and an adjustable cleaning timer allows optimized cleaning time based on part geometry and resin type. **Dedicated drain and fill ports** facilitate easy maintenance; a pot life timer notifies when the cleaner has reached saturation limits. A tritan plastic reservoir provides **clear process and cleaner level viewing**, and provides **maximum durability** for production environments.

The ability to **automatically raise and lower the Z-axis** with a secondary lid/cover provides an extra safeguard from chemical exposure, and reduces solvent evaporation. A **touch screen** user interface makes it easy to set bath cleaning duration, agitation speed/direction, and cleaner useful life.





## Key Features

### SIMPLE OPERATION

Touch screen user interface with color display

### EFFICIENT

Bidirectional magnetic stirrer agitation with variable speeds

### CONVENIENT

Accepts 2x NXE400/NXD200 build platforms, and/or loose parts basket

### FUNCTIONAL

35L Tritan reservoir with drain/fill ports

### INTUITIVE WORKFLOW

Adjustable cleaning cycle timer and cleaner saturation timer

### SUSTAINABLE

Reduce cost and environmental impact with Nexa xCLEAN part washing solution

## Technical Data

### Overall Dimensions

L x W x H:

400 x 420 x 860mm

Weight

60kg (wet)

**Reservoir Capacity:**

35L

### Maximum part capacity

L x W x H

275 x 155 x 400mm

Weight

7kg

**Agitation Method**

Magnetic impeller, variable speed

**Power Supply**

110-240VAC 50/60Hz

**Recommended Operating Temperature**

+10 °C to +40 °C (+50 °F to +104 °F)