

# solidxperts

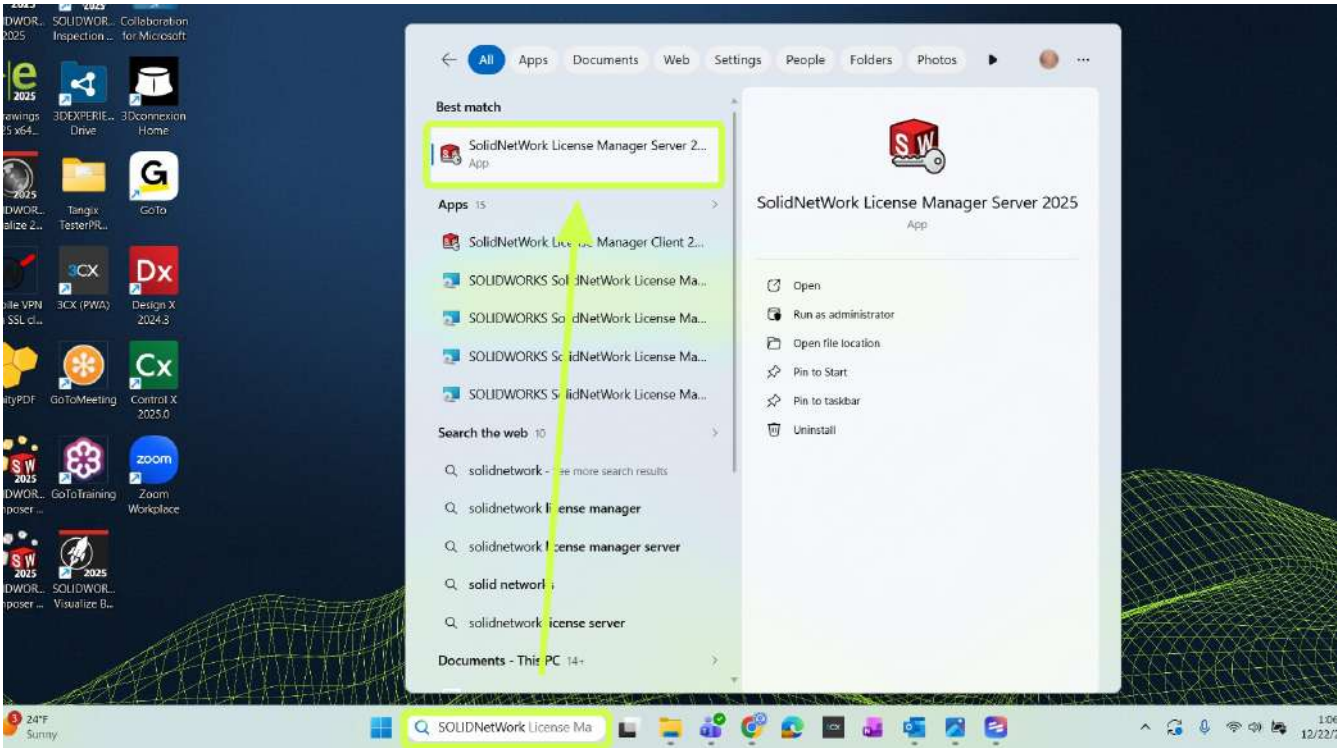
 *SOLIDWORKS*

---

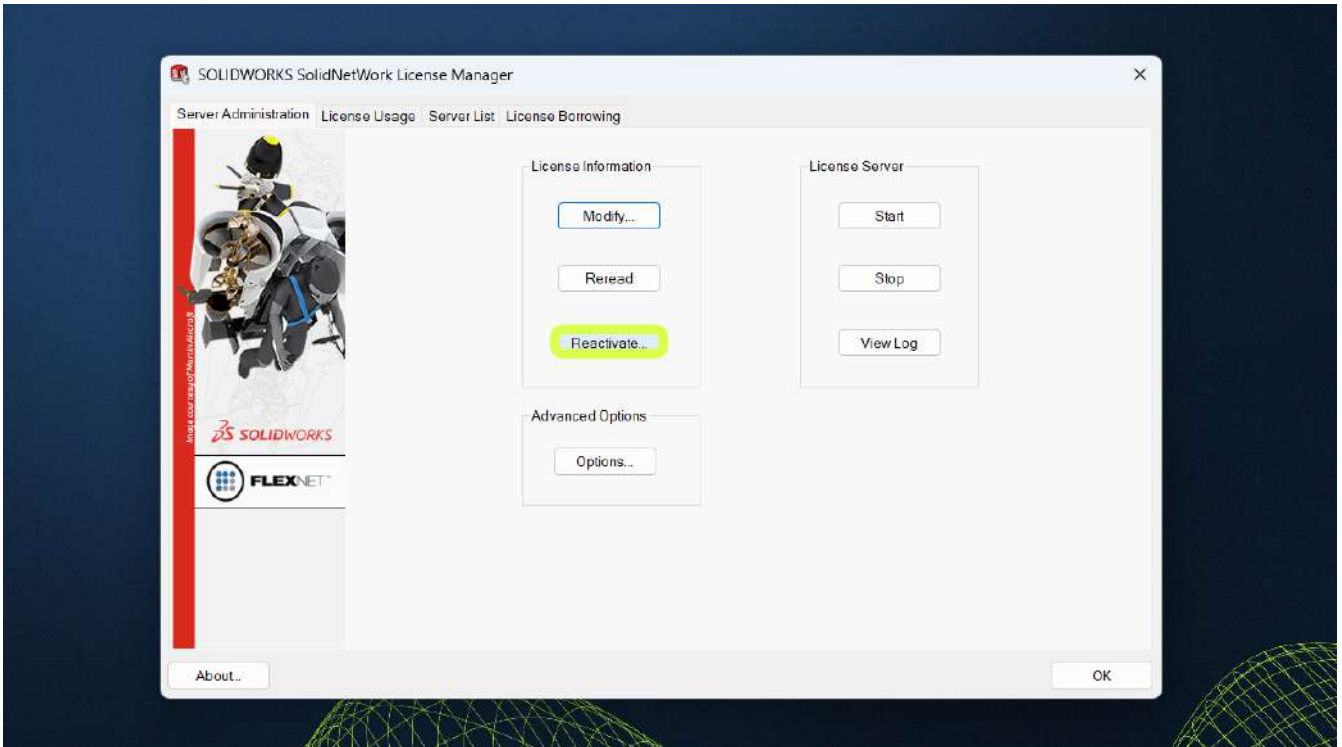
## HOW TO ACTIVATE OR REACTIVATE LICENSES ON YOUR SOLIDNETWORK LICENSE SERVER

Sometimes a client machine is unable to find an active license to use, even when the licenses should be available. The most common solution to this problem is to reactivate your licenses to refresh the server. The following steps will detail this process.

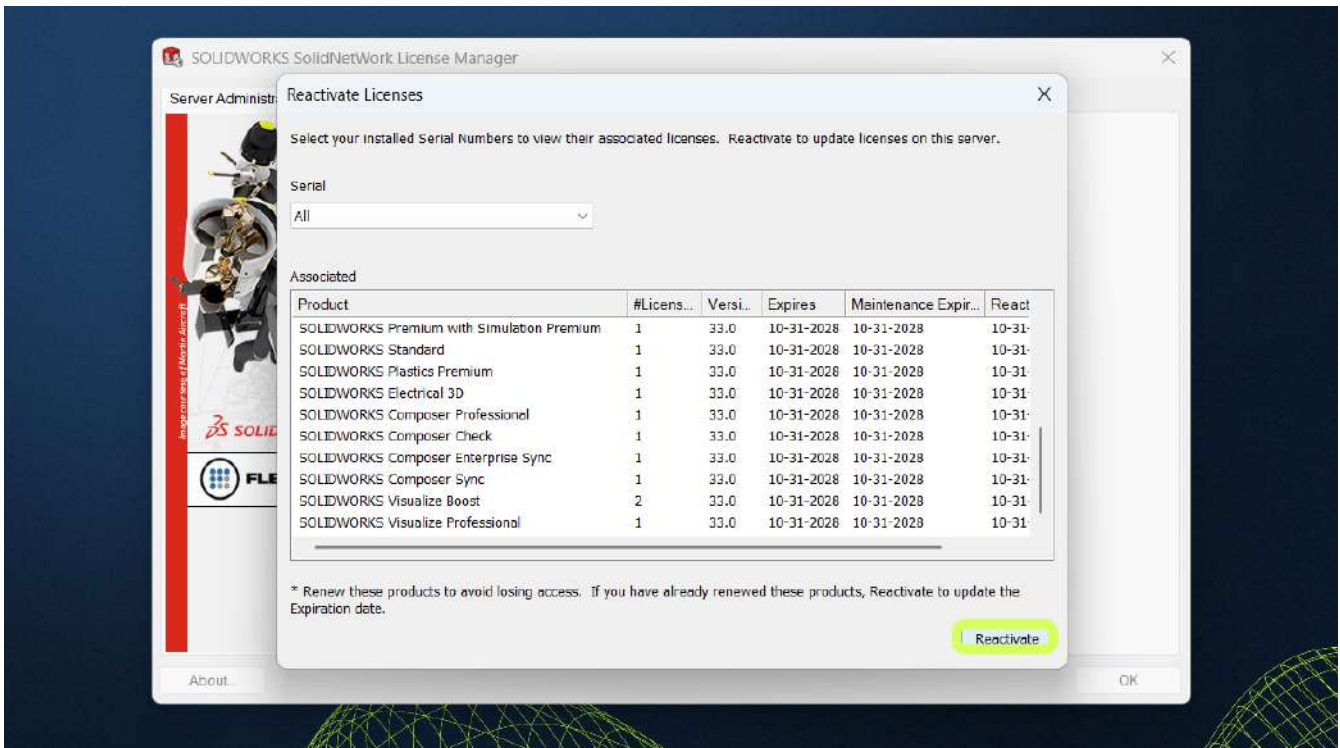
1. In the Window's Search Bar, search for «SolidNetWork License Manager Server 20XX», then select **SolidNetWork License Manager Server 20XX** to launch the application.



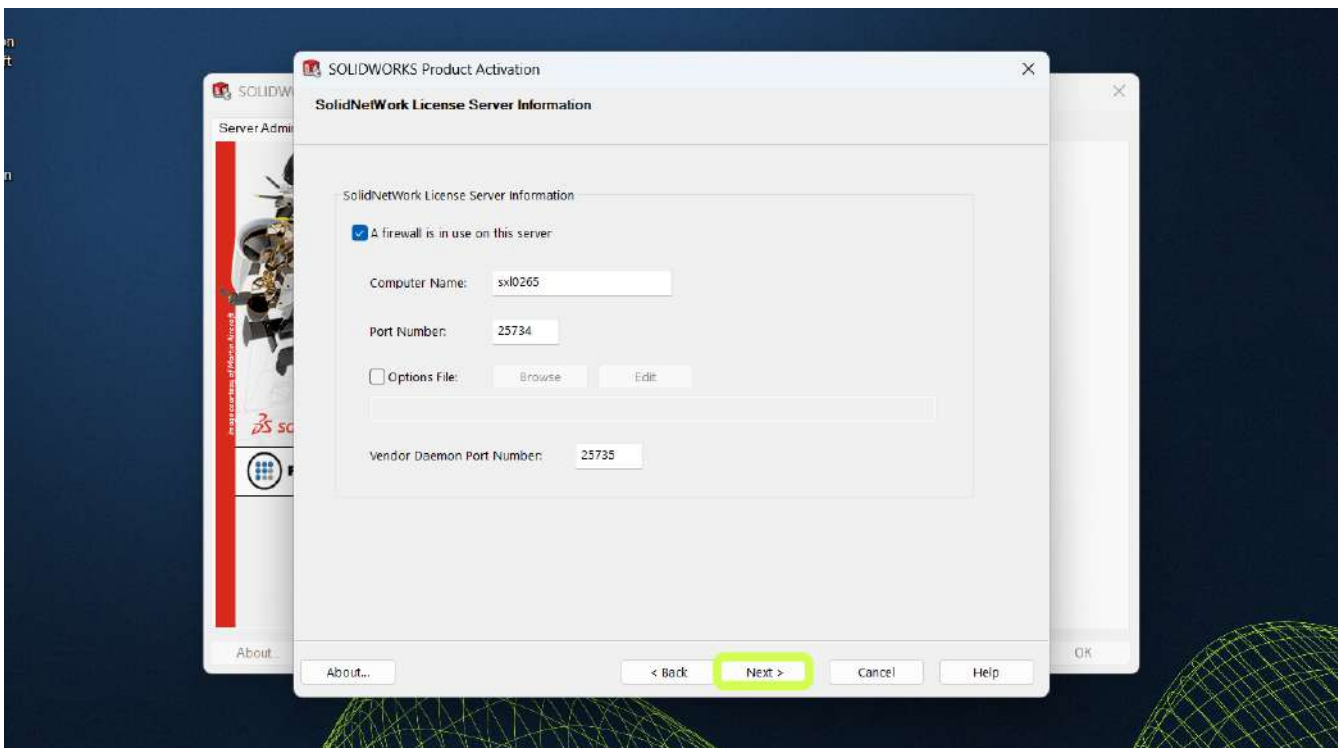
2. When prompted, select **Yes** when asked if you want to make changes to this device. Once the menu opens, select **Reactivate...**



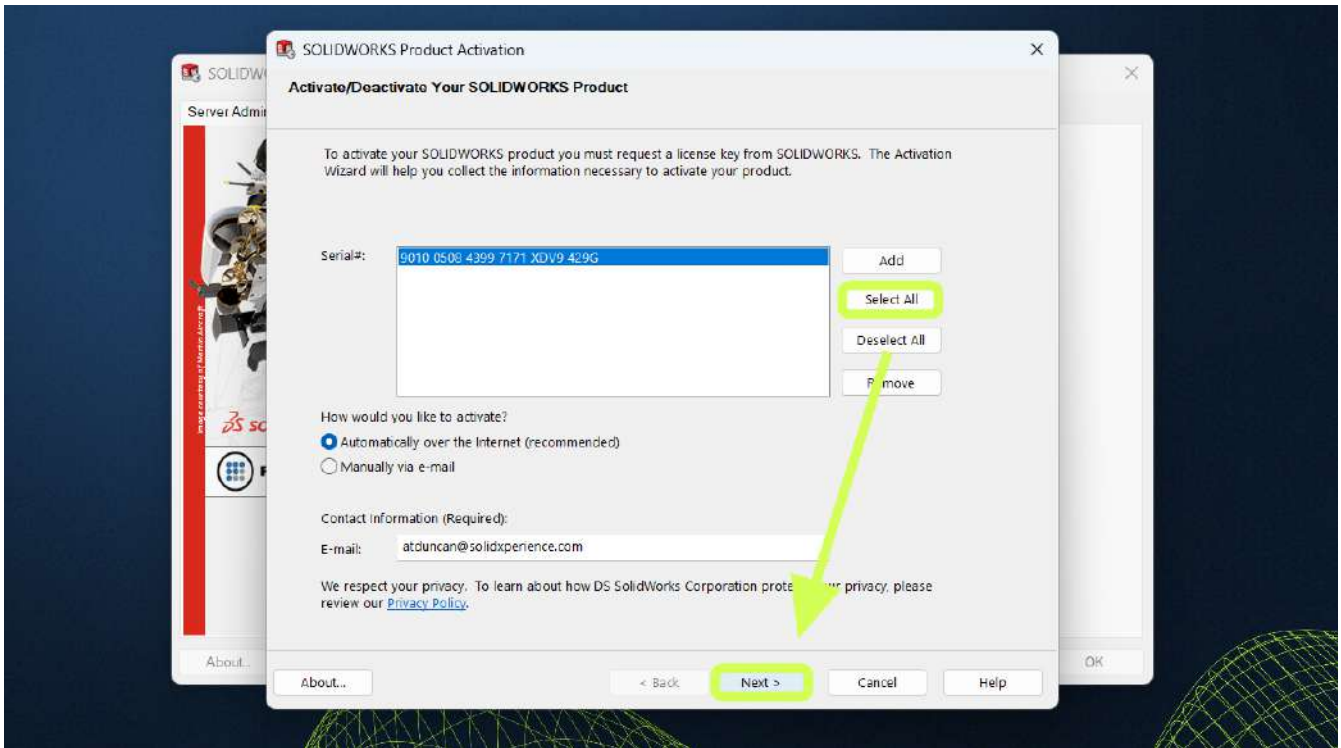
3. Ensure that the desired products are listed in the window. If they are not, you may need to add additional serial numbers. See the «How to Add Another License to the SOLIDWORKS License Server» document for more information on this subject. If the desired licenses appear, select **Reactivate**.



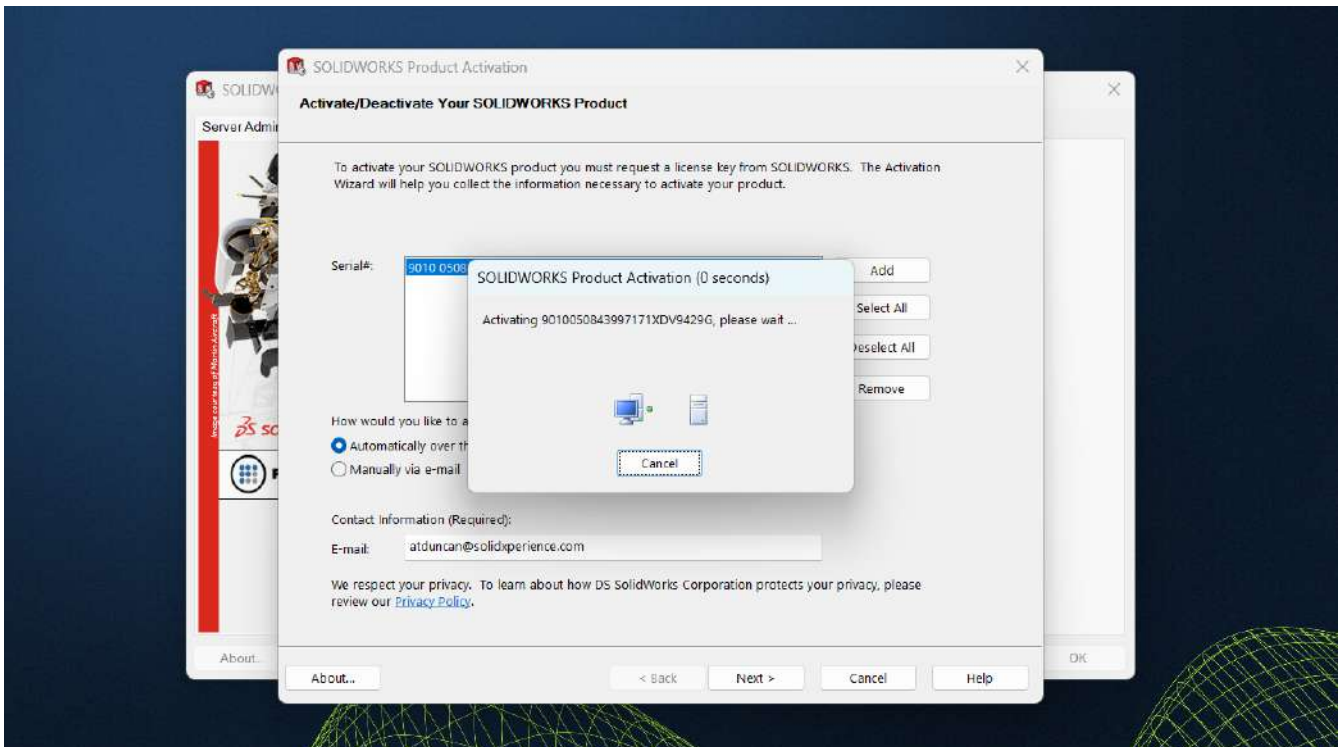
4. Ensure the information regarding firewalls is correct (most systems default to port 25734). When the information is correct, select **Next >**.



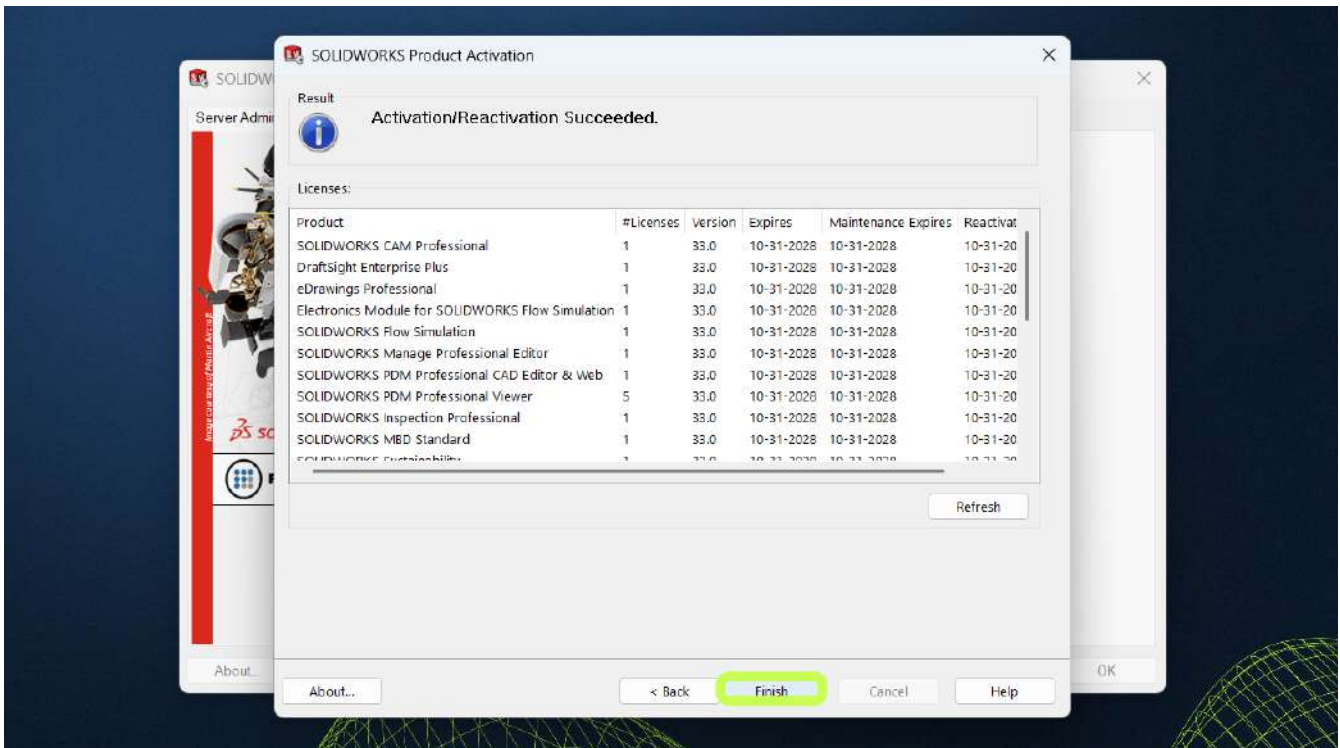
5. Chose how you want to activate the licenses (the system defaults to automatic activation); select **Select All**, then select **Next >**.



6. The server will activate your licenses (if automatically over the internet was selected), and you will see this loading screen until completion. You do not need to select anything until the activation is completed.



7. Once the activation completes, you will see this success screen. Select **Finish** to finish the activation process.



8. If you navigate to the **License Borrowing** tab, you will be able to see all available licenses active. To close the window, select **OK**.

